

OBSOLESCENT TYPE  
 MAINTENANCE TYPE



ZM1080  
 ZM1082

## INDICATOR TUBE

Cold-cathode ten-digit side viewing numeral indicator tube

### QUICK REFERENCE DATA

Numeral height		13	mm
Numerals	1 2 3 4 5 6 7 8 9 0		
Supply voltage	$V_b$	min. 170	V
Cathode current	$I_k$	2	mA
Distance between mounting centres		min. 19	mm

### GENERAL

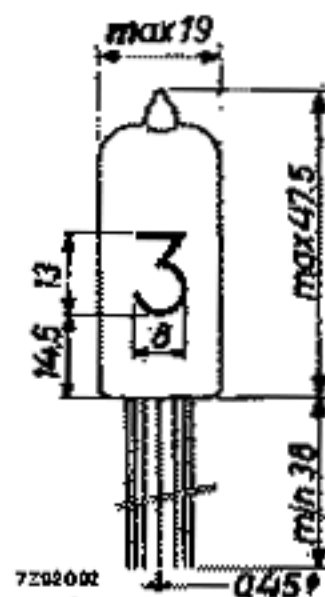
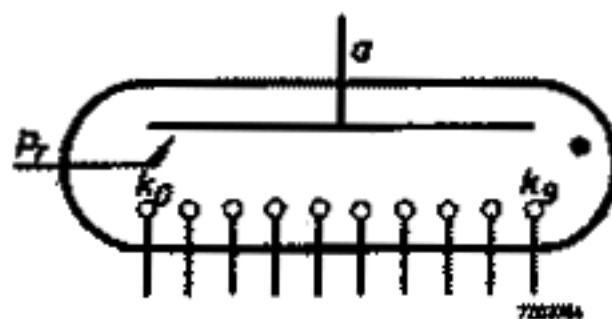
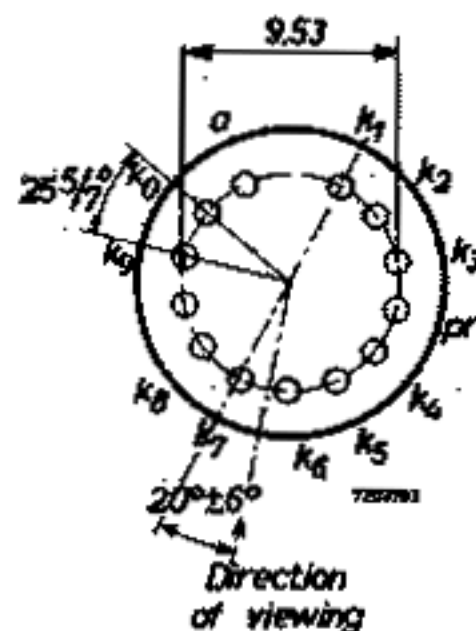
The numerals are 13 mm high and appear on the same base line allowing in-line read out. The ZM1080 is identical to the ZM1082 but is provided with a red contrast filter.

### PRINCIPLE OF OPERATION

The tube contains ten cathodes in the form of ten figures and one common anode. By applying a suitable voltage between the anode and one of the ten cathodes the corresponding figure will be covered by a red neon glow.

### DIMENSIONS AND CONNECTIONS

Dimensions in mm



Mounting position: any