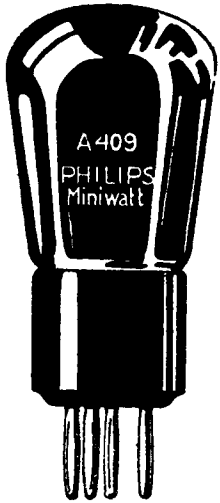
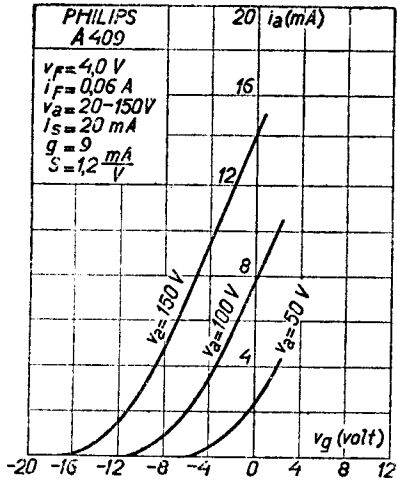


PHILIPS „MINIWATT” A 409



| | |
|---------------------------|---------------------------|
| Gloeispanning | $v_f = 4,0 \text{ V}$ |
| Gloeistroom | $i_f = 0,06 \text{ A}$ |
| Anodespanning | $v_a = 20-150 \text{ V}$ |
| Verzadigungsstroom | $i_s = 20 \text{ mA}$ |
| Versterkingsfactor | $g = 9$ |
| Steilheid | $S = 1,2 \text{ mA/V}$ |
| Inwendige weerstand | $R_i = 7500 \ \Omega$ |
| Negatieve roosterspanning | $v_g = 9 \text{ V}$ |
| Normale anodestroom | $i_a = 3,5 \text{ mA}$ |
| Anode-roostercapaciteit | $C_{ag} = 2,5 \text{ cm}$ |
| Grootste diameter | $d = 42 \text{ mm}$ |
| Grootste lengte | $l = 82 \text{ mm}$ |



De A 409 is een zeer goede detector- en laagfrequent-versterkerlamp.