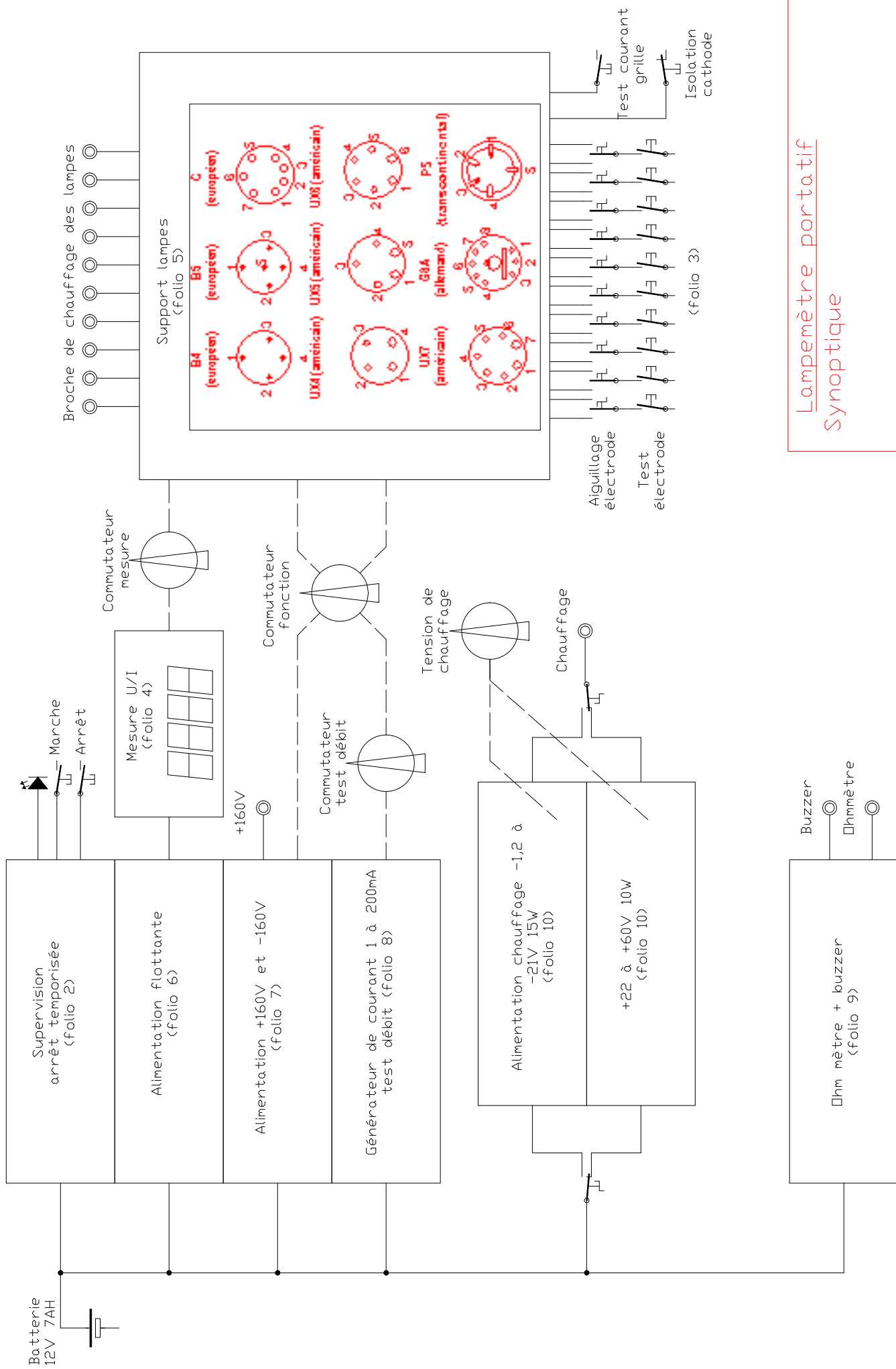
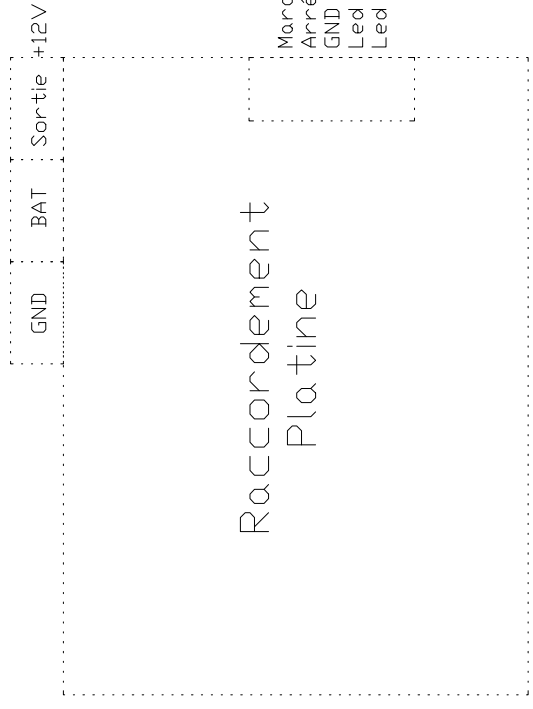
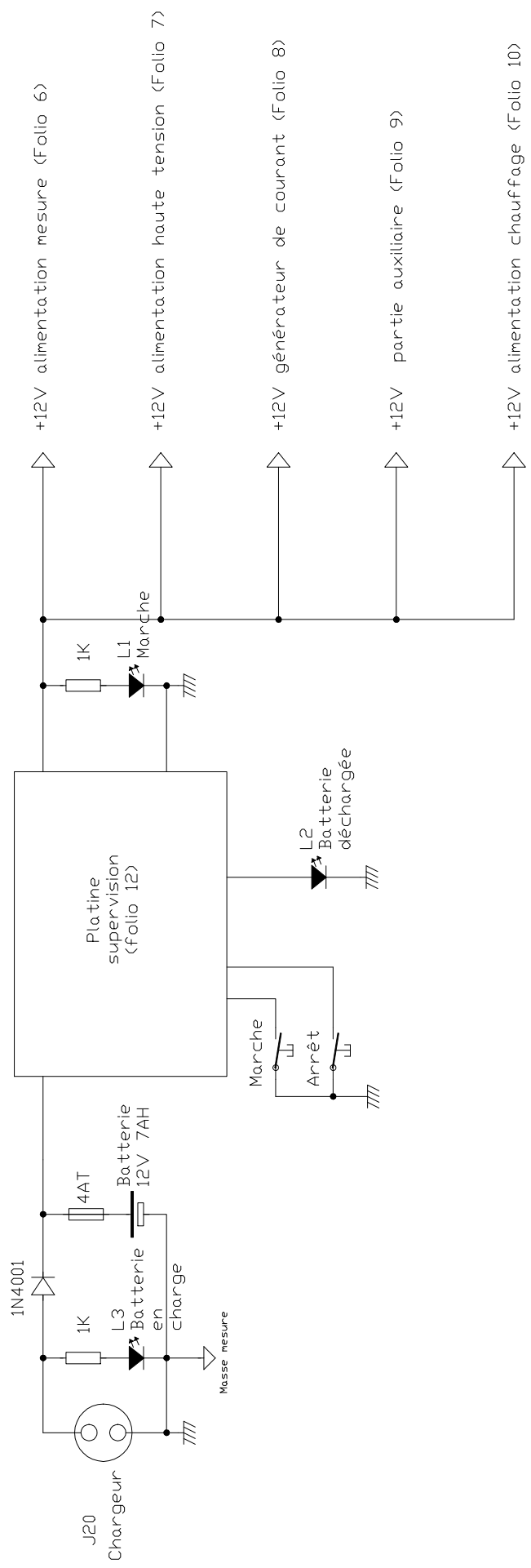


# **LAMPEMETRE PORTATIF**

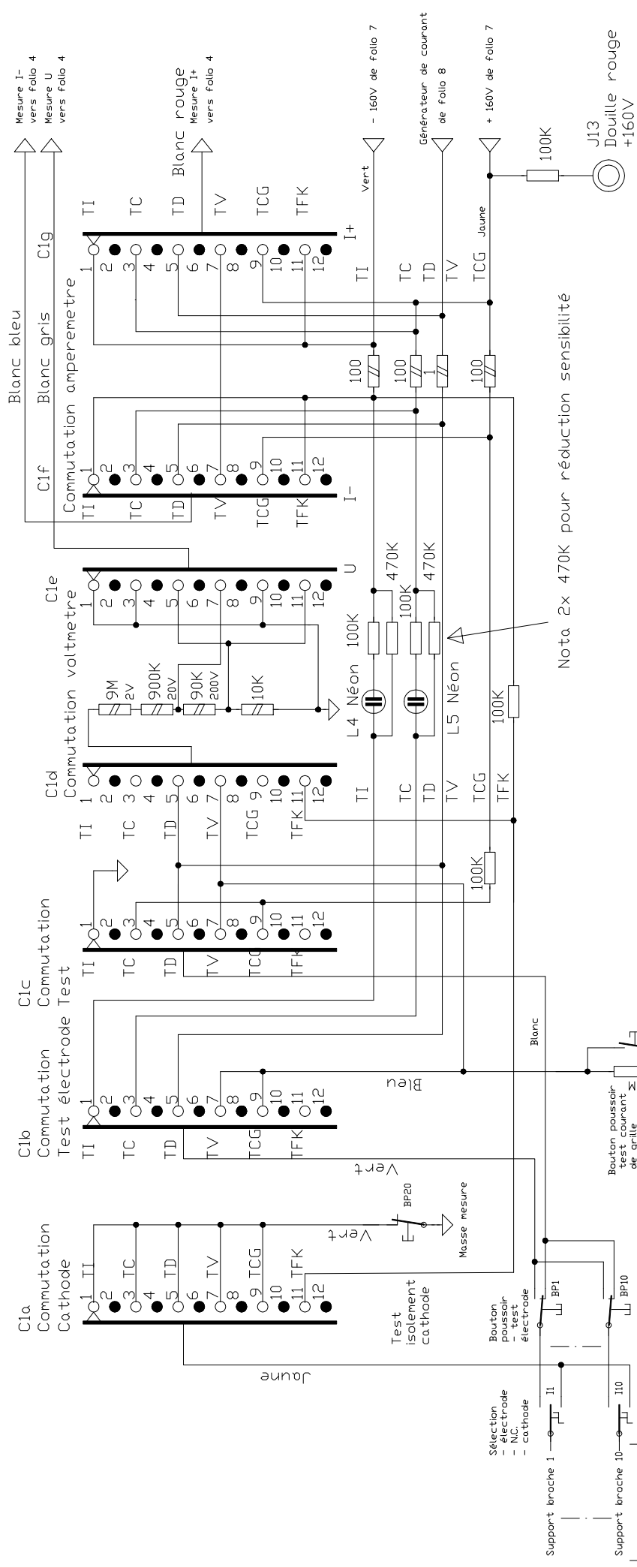
**Autonome sur  
batterie**



Lampemètre portable  
Synoptique



Lampemètre portatif  
 Alimentation par accumulateur



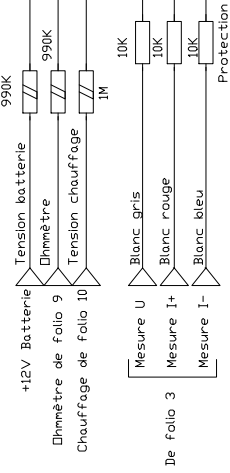
Nota 2x 470K pour réduction sensibilité

- Commutateur  
 Fonction test  
 1) test d'isolation TI  
 2) test de continuité TC  
 3) test de débit TD  
 4) test du vide TV  
 5) tests courant grille TCG  
 test isolation filament cathode TFK

Lampemètre portatif  
 Computation des fonctions  
 de test et des électrodes  
 4/05/2002 Folio 3

### Commutation mesure

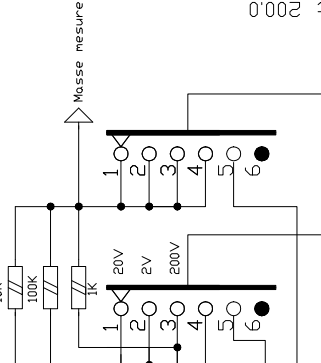
- 1- Tension batterie
- 2- Ohmmètre
- 3- Tension chauffage
- 4- Test tension
- 5- Test courant



### Commutation mesure

C2a

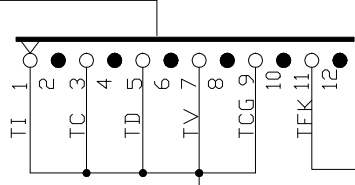
C2b



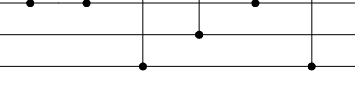
C1h  
Commutation  
point décimal  
tension

C2c  
Incolore  
Rouge  
Vert  
Orange  
Bleu blanc  
Blanc

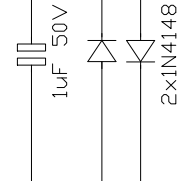
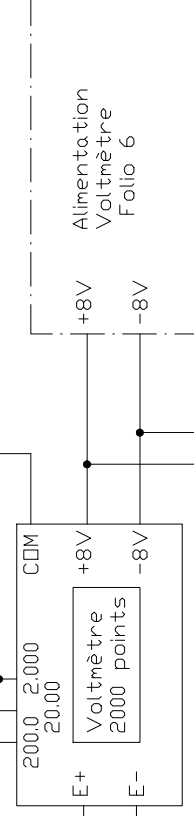
C1i  
Commutation  
point décimal  
intensité



Incolore 2,00  
Rouge 20,0  
Vert 200,0

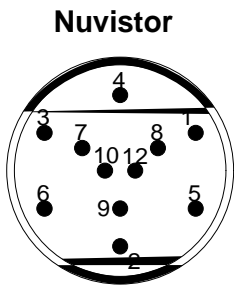
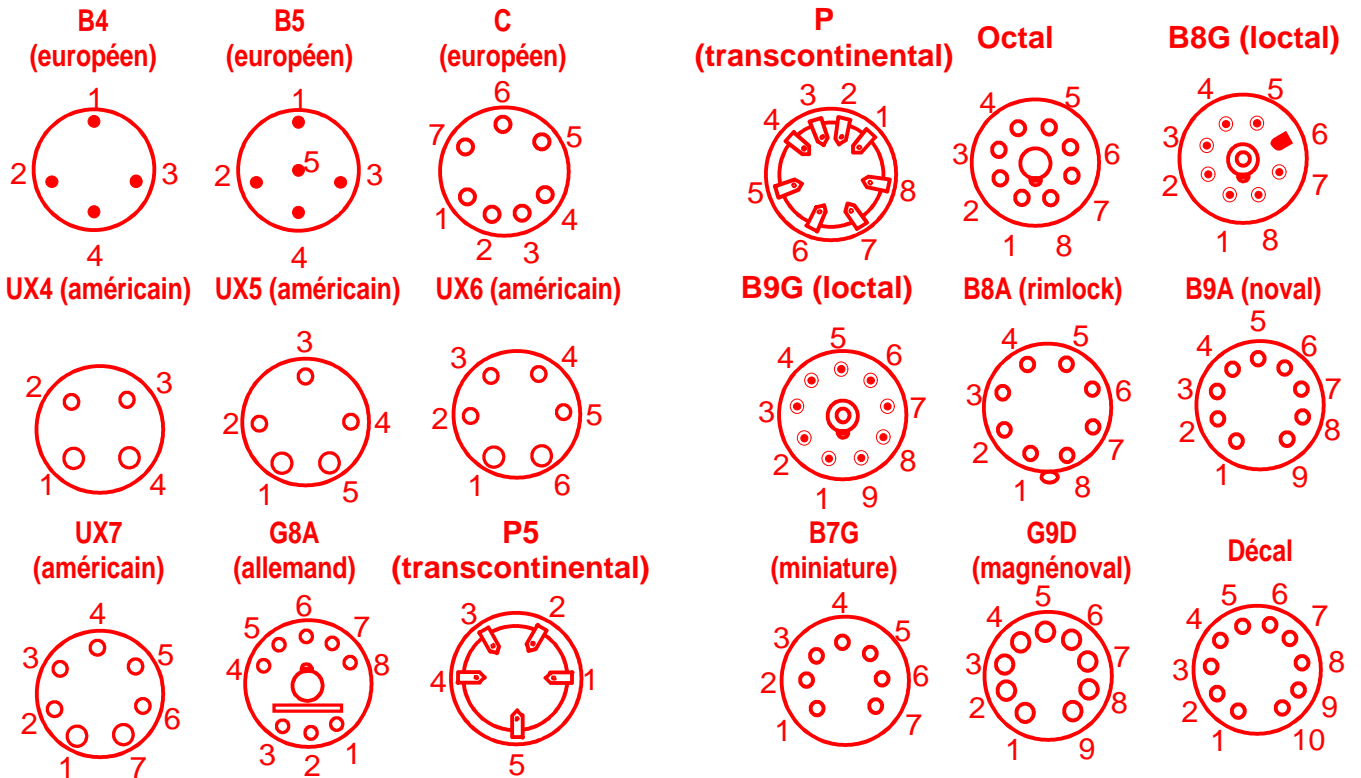


Brun  
2K  
2x3,3V

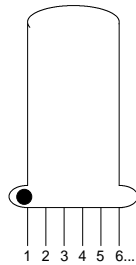


Lampemètre portatif  
Commutation mesure  
partie mesure

## Connexion des supports des interrupteurs de choix d'électrode

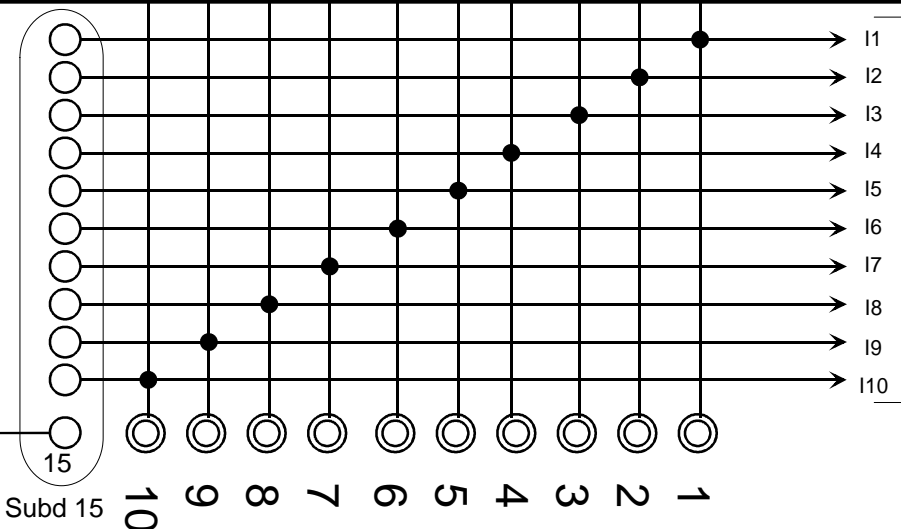


**Subminiature**



## Brochage des supports (vue de dessous)

- B4 Européen 4 broches
- B5 Européen 5 broches
- C Européen 7 broches
- UX4 Américain 4 broches
- UX5 Américain 5 broches
- UX6 Américain 6 broches
- UX7 Américain 7 broches
- G8A Allemand 8 broches
- P5 Transcontinental 5 broches
- P Transcontinental 8 broches
- I.O. Octal
- B8G Loctal 8 broches
- B9G Loctal 9 broches
- B8A Rimlock
- B9A Noval
- B7G Miniature
- B9D Magnénoval
- Decal Décals

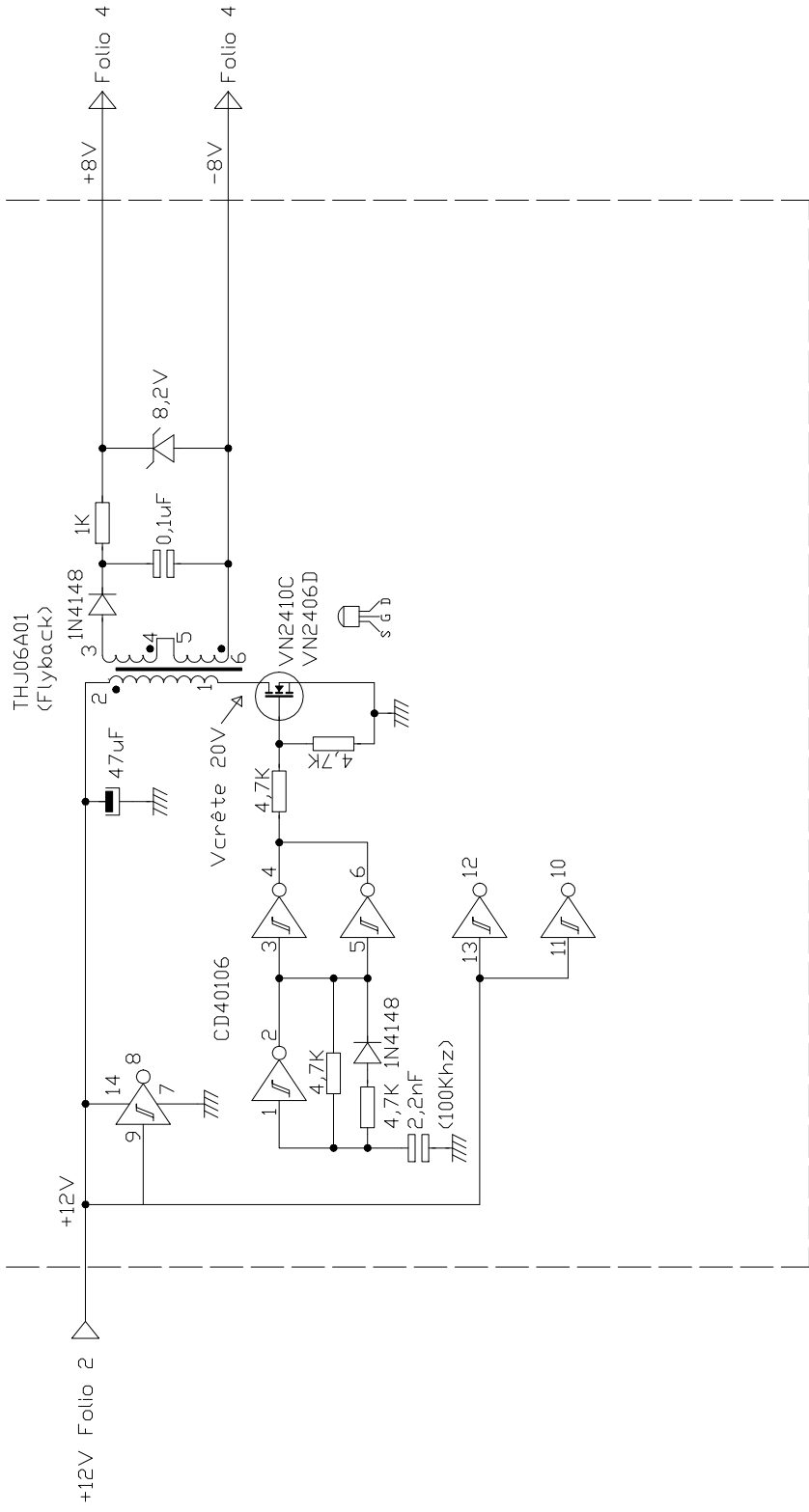


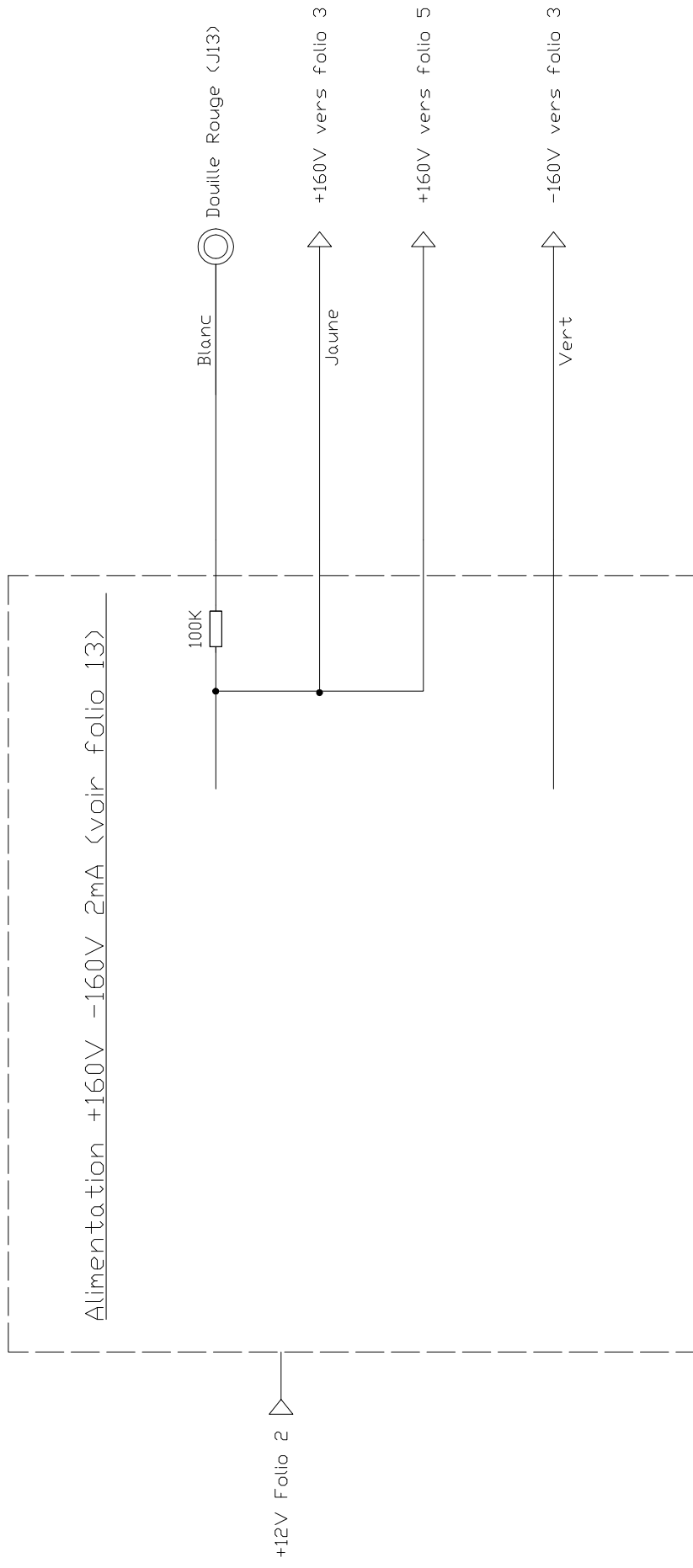
Vers I1 à I10  
folio 3

+160 V de folio 7

Douille de connexion chauffage

# Alimentation 8V 1mA flottante pour voltmètre

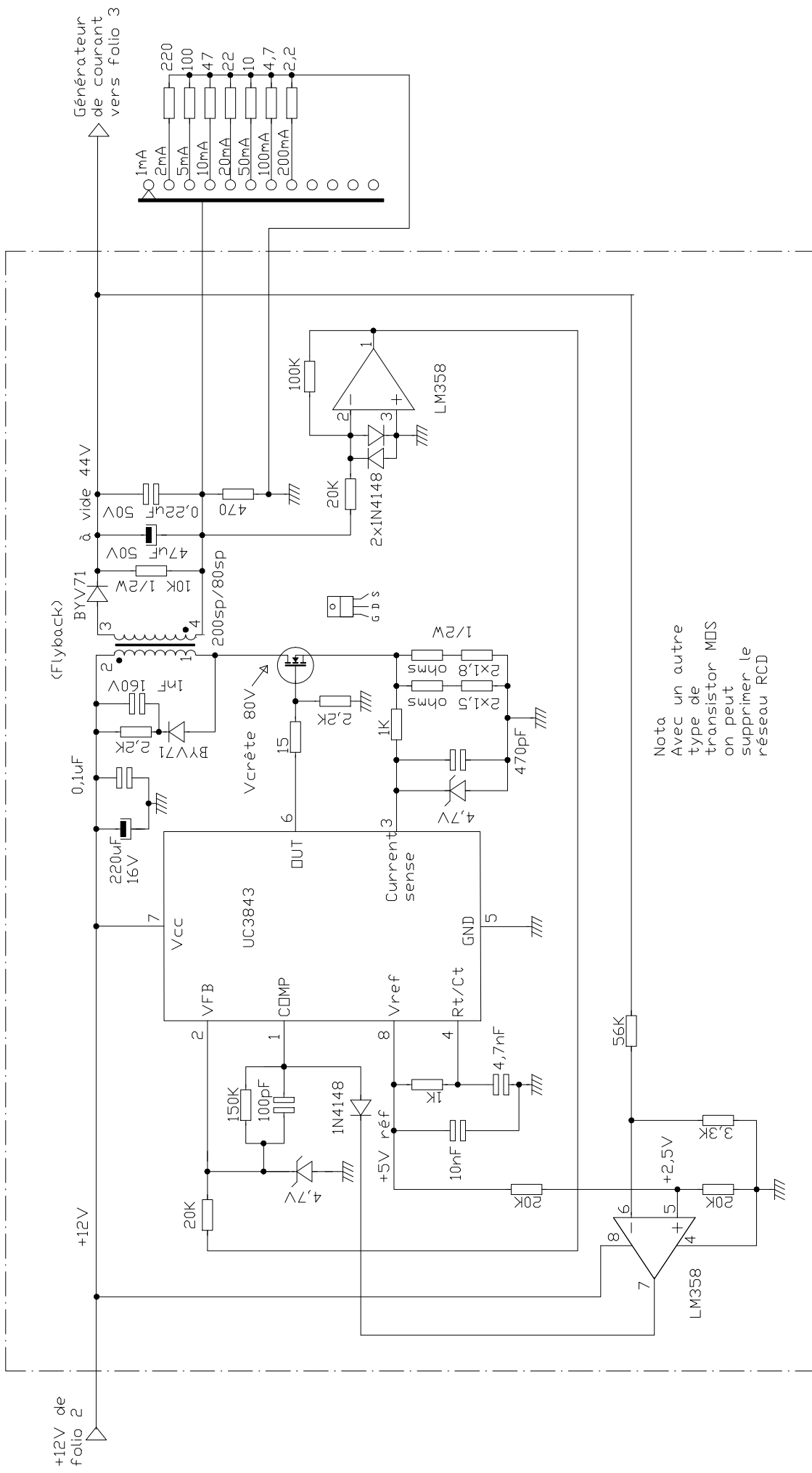




Lampemètre portatif

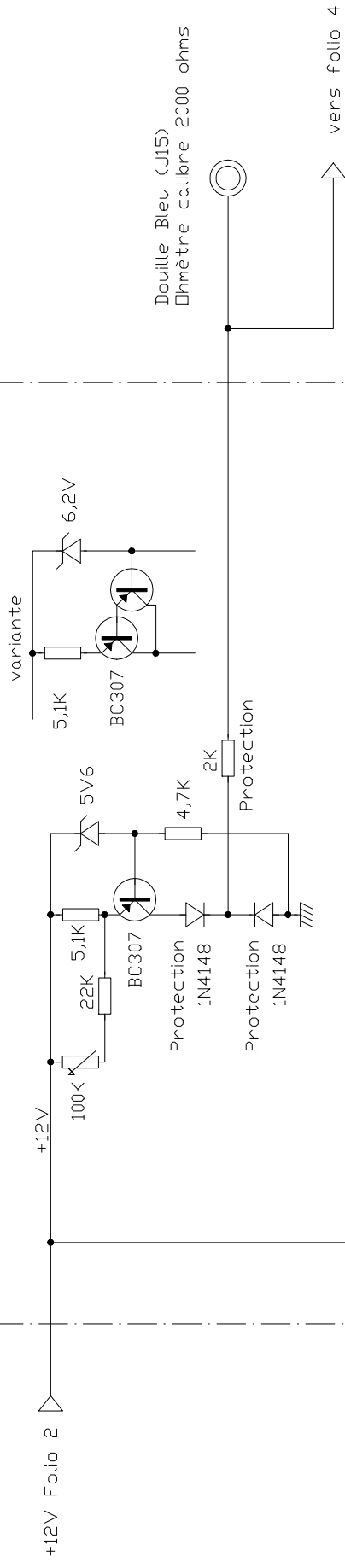
Alimentation partie mesure





Nota  
 Avec un autre  
 type de  
 transistor MOS  
 on peut  
 supprimer le  
 réseau RCD

# Générateur de courant 1mA

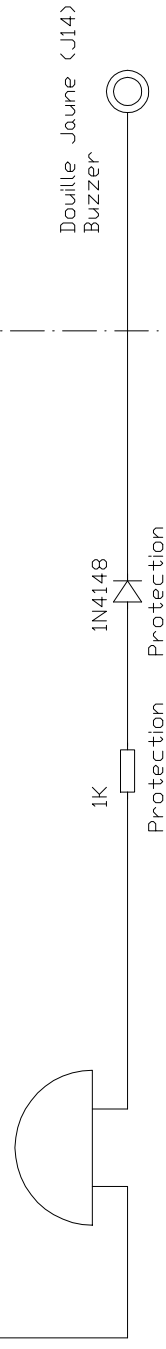


Douille Bleu (J15)  
Ohmètre calibre 2000 ohms

vers folio 4

# Bip (Buzzer) pour test de continuité filament

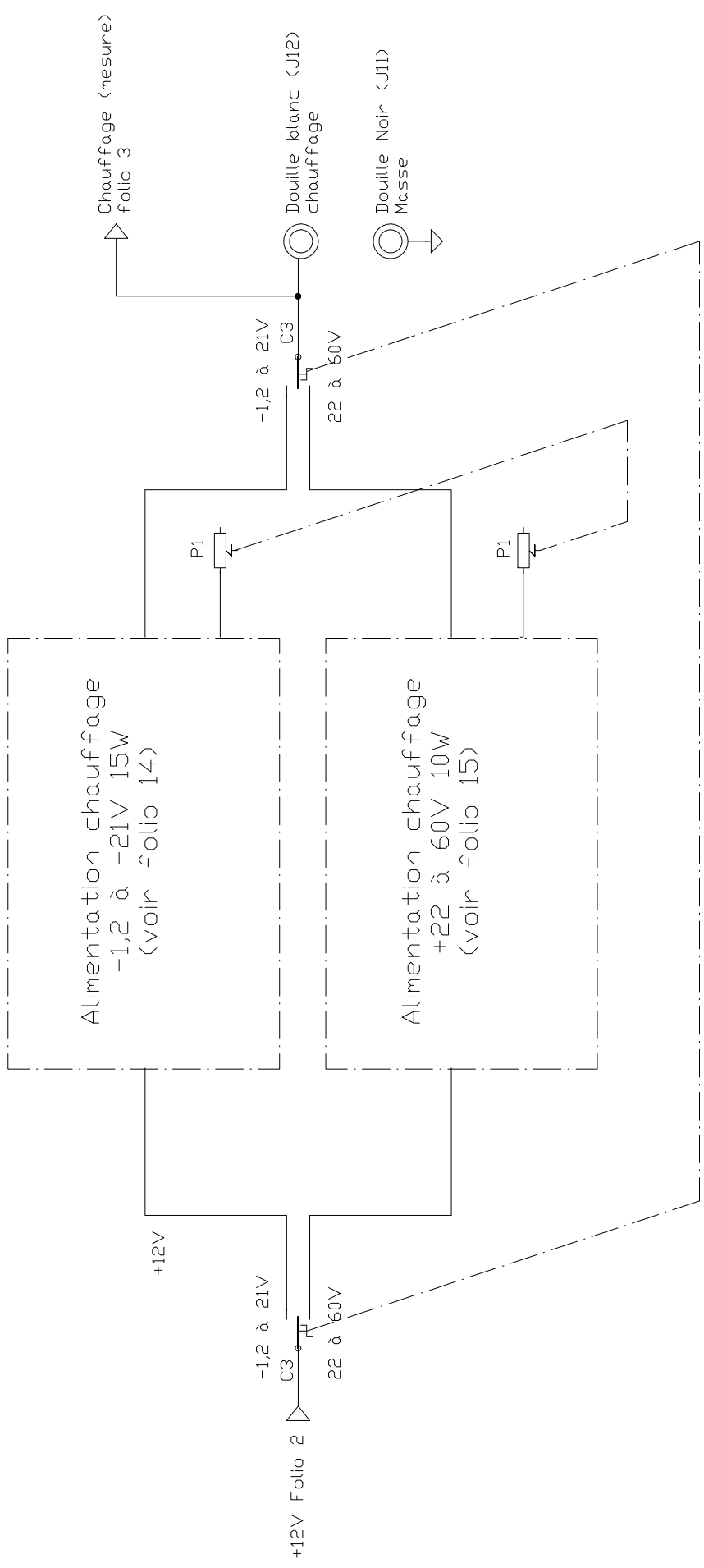
Buzzer 5-12V 2mA



Douille Jaune (J14)  
Buzzer

Lampemètre portatif

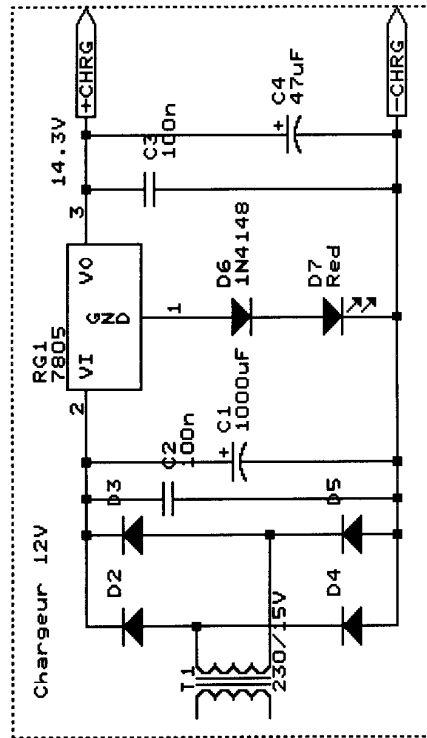
Fonctions auxiliaires



Lampemètre portatif

Alimentation partie chauffage

# Lampemètre portatif Folio 11



EM TEST

Title

Alim 5V et chargeur

Size Document Number

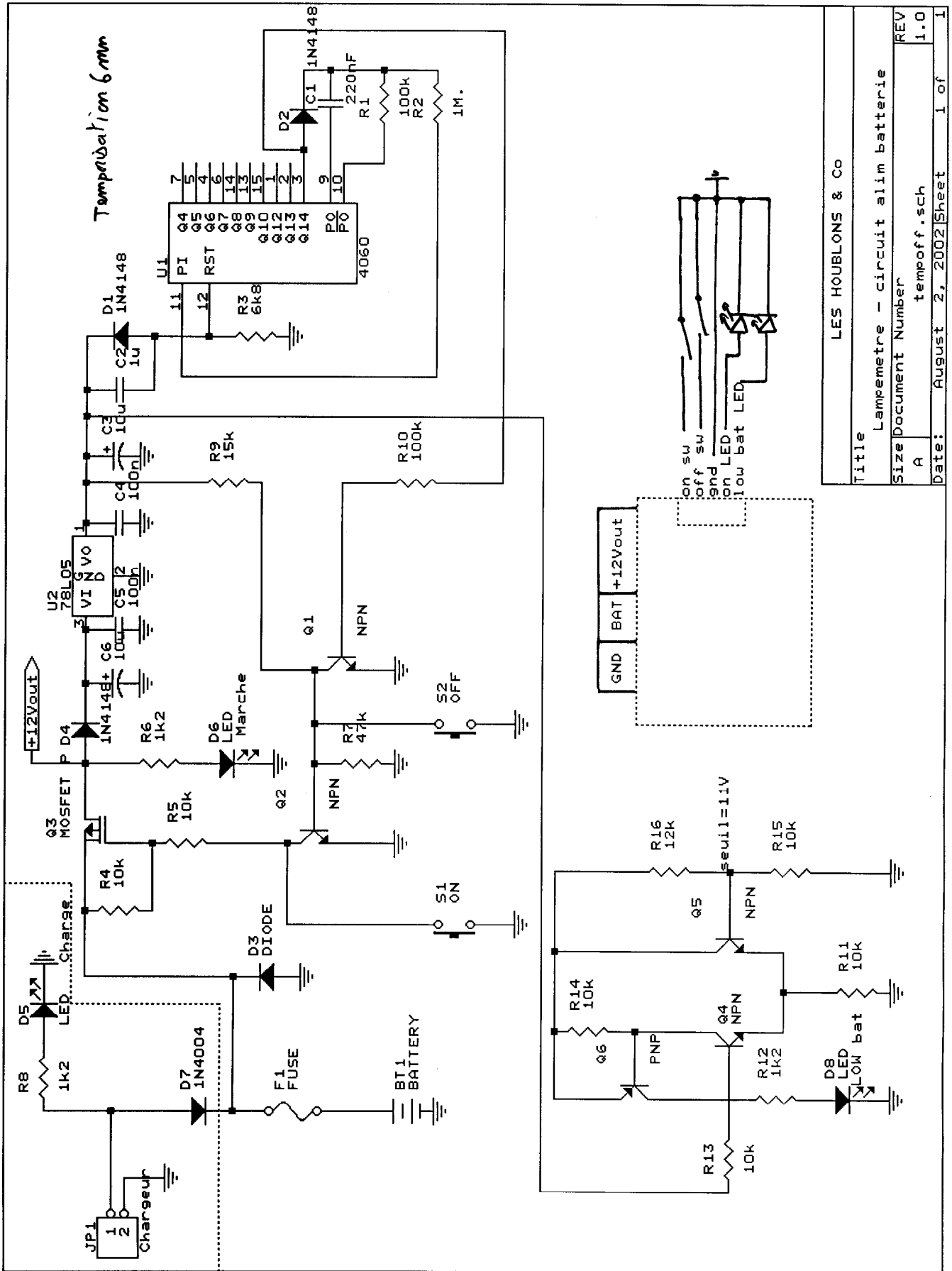
A emtest4.sch

Date: April 14, 2002 Sheet 1 of 1

REV

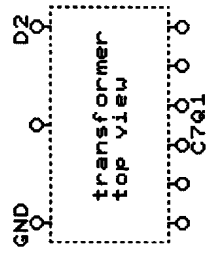
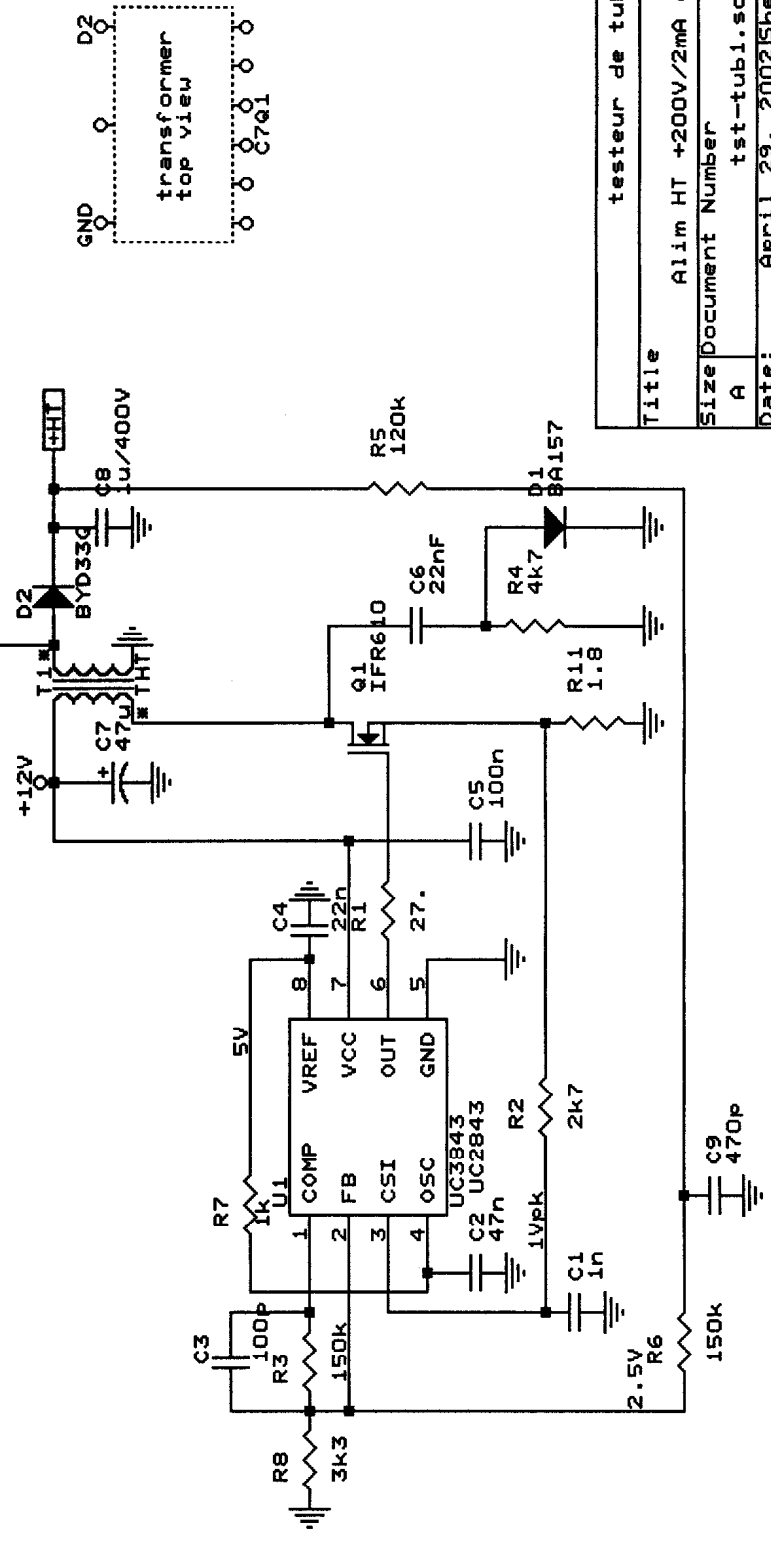
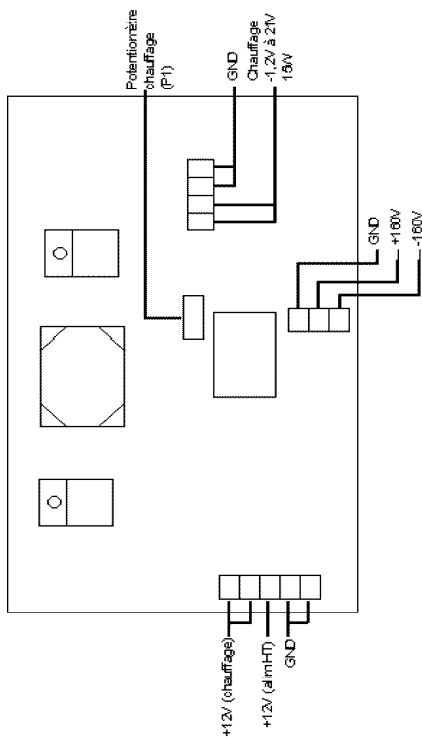
1.0

# Lampemètre portatif Folio 12



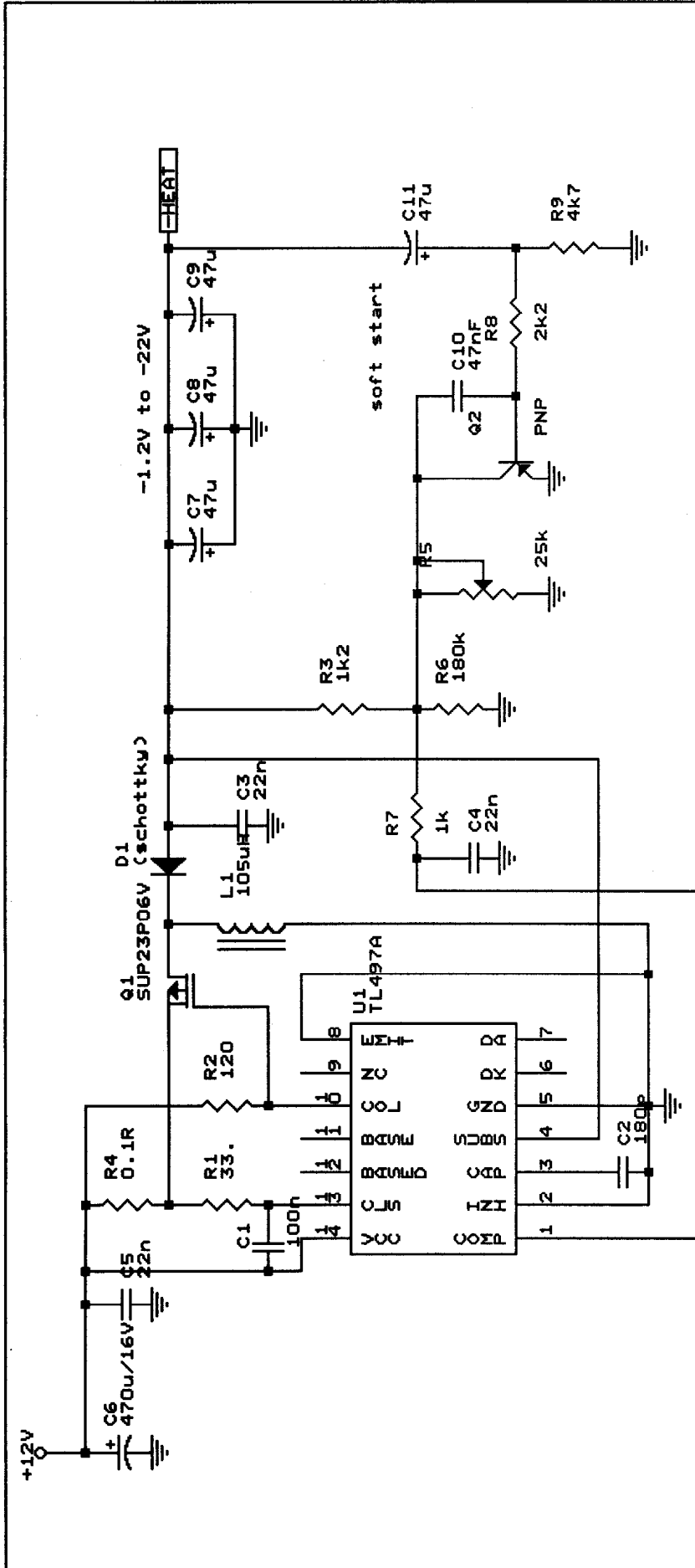
# Lampemètre portatif Folio 13

Raccordement platine chauffage -1,2 à -21V 15W  
et alimentation +160V et -160V

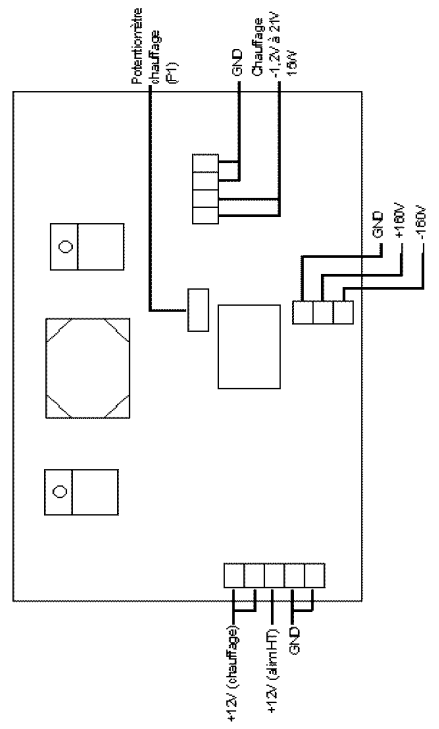


Title		testeur de tubes	
Size Document Number		Alim HT +200V/2mA et -150V	
A	tst-tub1.sch	REV	1.0
Date:	April 29, 2002	Sheet	1 of 1

# Lampemètre portatif Folio 14

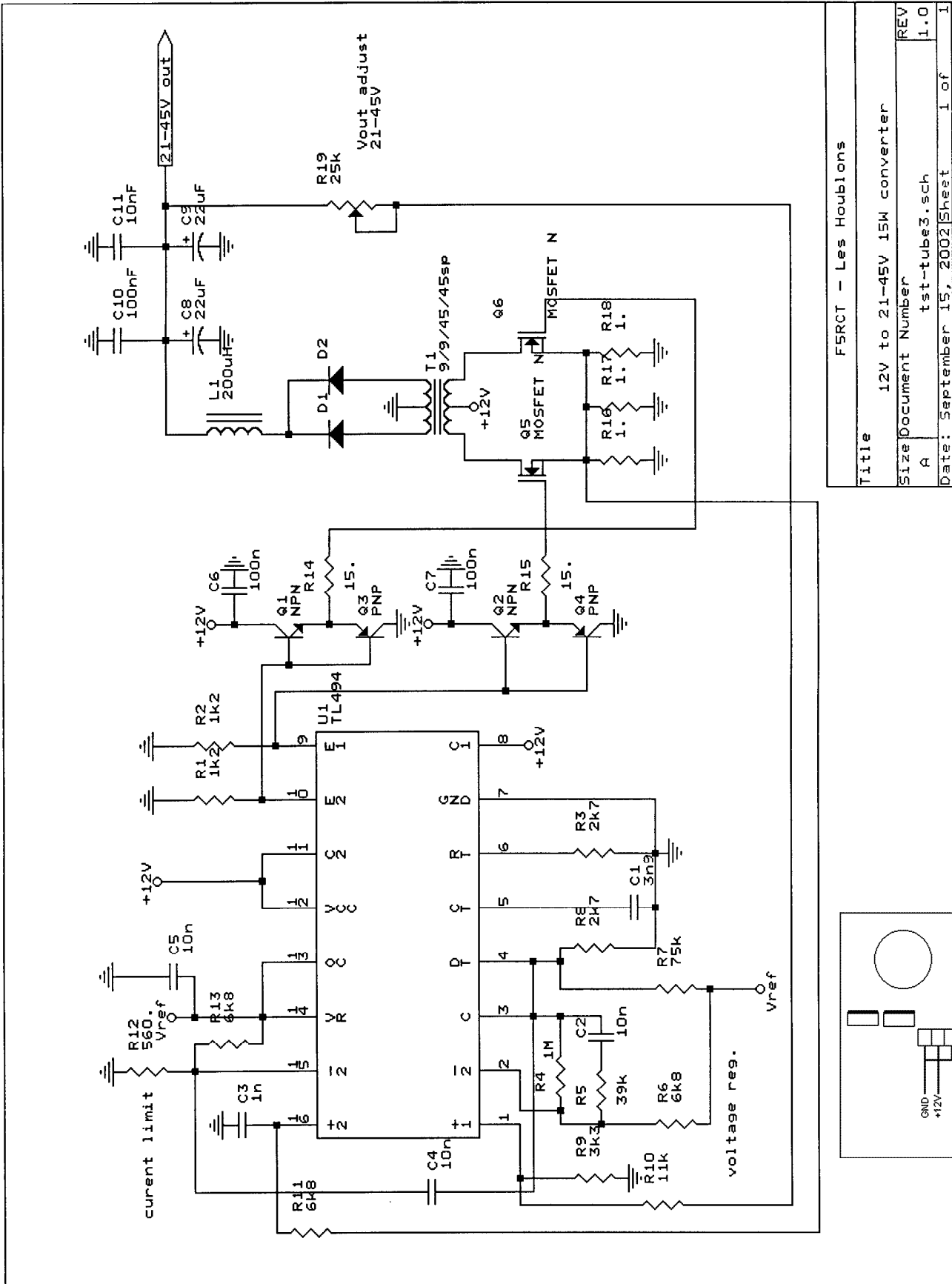


Raccordement platine chauffage -1,2 à -21V 15W  
et alimentation +160V et -160V



Title		testeur de tubes	
Size Document Number		Alim chauffage 1.2-22V	
Date:		tst-tub2.sch	
REV		1.0	
Sheet		1 of 1	

# Lampemètre portatif Folio 15



F5R0CT - Les Houblons	
Title	12V to 21-45V 15W converter
Size	Document Number
A	tst-tube3.sch
REV	1.0
Date:	September 15, 2002
Sheet	1 of 1

